



Royal Solent Yacht Club
Yarmouth, Isle of Wight

Notices of Race,
Supplemental Sailing Instructions
& Entry Forms
for RSYC Races
and
Standard Sailing Instructions 2010

Royal Solent Yacht Club

Royal Solent Yacht Club is a trading name of Royal Solent Yacht Club Ltd

Registered Office, Yarmouth, Isle of Wight, PO41 ONS

Registered in England No 05272681

| | |
|--------------------------|-----------------|
| Commodore | Jeremy Willcock |
| Vice Commodore | Roger Granger |
| Rear Commodore (Sailing) | Dick Dawson |
| Secretary | Hamish Fletcher |

Telephone Numbers

| | |
|-----------|----------------|
| Secretary | (01983) 760256 |
| Members | (01983) 760239 |
| Caterer | (01983) 760110 |
| Fax | (01983) 761172 |

EMail: office@royalsolent.org
Web Site www.royalsolent.org.

CONTENTS

| | Page No |
|---|----------------|
| Notices to Competitors | 6 |
| Condition of Entry Form | 7 |
| Wednesday Evening Series | 9 |
| Notice of Race & Supplemental Sailing Instructions | |
| The Queen's Jubilee Race | 13 |
| Notice of Race & Supplemental Sailing Instructions and Entry Form | |
| Sunset Series | 17 |
| Notice of Race & Supplemental Sailing Instructions | |
| Centenary Chase | 19 |
| Notice of Race & Supplemental Sailing Instructions | |
| RSYC Standard Sailing Instructions 2010 | 22 |
| Appendix 1 | 30 |
| Appendix 2 | 31 |
| Appendix 3 | 32 |

NOTICES TO COMPETITORS

The Flag Officers and Members of the Royal Solent Yacht Club extend a warm welcome to competitors as visitors to the Club. They are requested to sign and enter their name and address in the Visitors' Book situated on the first floor landing and should acquaint themselves with the Bye-Laws of the Royal Solent Yacht Club, particularly those concerning dress.

Avoiding possible collision with Ferries

Competitors are reminded that under rule 9 (b) of the International Regulations for Preventing Collisions at Sea “a vessel of less than 20 metres in length or a sailing vessel shall not impede the passage of any other vessel navigating within a narrow channel or fairway”. The approach to Yarmouth Harbour between the Harbour East buoy (The Fairway Buoy) and the Harbour is considered to be a fairway.

Ferries have extreme difficulty in strong winds and tides when approaching or leaving Yarmouth Harbour and competitors should err on the side of safety and give way early if there is any possible doubt.

RYA Racing Charter

Competitors should note that the Royal Solent Yacht Club implements the RYA Racing Charter and that they will be required to undertake to sail in accordance with the charter, which can be found in the front pages of the RYA Rule Book (Racing Rules of Sailing 2009-2012 or at www.rya.org/racing/charter).

Condition of Entry Form

All competitors MUST complete and sign the form opposite and return to the Honorary Sailing Secretary prior to taking part in any race. It is essential that this form is completed in FULL.

Definitions

Throughout this document, the following definitions are in force:
RRS—the ISAF Racing Rules of Sailing 2009-2012
SSI—the Royal Solent Yacht Club Standard Sailing Instructions 2010

ROYAL SOLENT YACHT CLUB

CONDITION OF ENTRY 2010

(delete where applicable)

I/Wewish to enter my/our boat for races organised by the Royal Solent Yacht Club. I/We agree to be bound by the Rules as defined in the Racing Rules of Sailing .

I/We undertake to sail in compliance with the RYA Racing Charter.

I/We certify that the particulars of my/our boat, as stated on this form, are correct.

I/We accept that neither the Royal Solent Yacht Club nor its representatives shall bear any responsibility for any loss, damage, death or personal injury howsoever caused to any boat, or members of its crew.

I/We confirm that I/we hold third party indemnity insurance with a minimum cover of £2,000,000.

I/We warrant the suitability of the boat for races and accept full responsibility for the sea-worthiness and safe navigation of the boat, the competence of the crew and pursuant to Fundamental Rule 4 for deciding whether to start, continue or retire from any race. I/We accept that any inspection of the boat does not in any way limit my/our absolute responsibility in these respects.

I/We undertake to draw these matters to the attention of all members of the crew before the start of each and every race.

Signature

Please complete details over

Details of Boat:

Name of boat

Sail No Class

Handicap: IRC PY..... Other

Details of Insurance

Insurance Company

Policy Number

Owner(s)

Address

.....

..... Post Code

Telephone Number

Home

Work.....

E-mail.....

Signed

Date

Owner / Person in charge (please delete as appropriate)



WEDNESDAY EVENING SERIES 2010

Series 1 - Wednesday 21st April - Wednesday 9th June

Series 2 - Wednesday 16th June - Wednesday 28th July

Series 3 - Wednesday 4th August - Wednesday 22nd Sept.

Champagne Race - Wednesday 29th September.

Wednesday Evening Prize Giving and Supper

Wednesday 6th October

Sailing Supper served every
Wednesday evening 19:30 - 21:00

Notice of Race and Supplemental Sailing Instructions

1. ORGANISING AUTHORITY

The Organising Authority is The Royal Solent Yacht Club (RSYC).

2. RULES

- 2.1 Racing will be governed by the Racing Rules of Sailing (RRS) and the RSYC Standard Sailing Instructions 2010, as amended by these Supplemental Sailing Instructions, shall apply. In cases where there is conflict between the Notice of Race, the Club's Standard Sailing Instructions, and the Supplemental Sailing Instructions; the Supplemental Sailing Instructions or failing that the Standard Sailing Instructions shall prevail.

3 SCHEDULE OF RACES

Series 1 21st April to 9th June inclusive.
Series 2 16th June to 28th July inclusive.
Series 3 4th August to 22nd September inclusive.
29th September Champagne End of Season Race

4. TIMES & SIGNALS

| Class | Warning Signal | Start Signal | Class Flag |
|---|---------------------------|-------------------------|-----------------------|
| Folkboats | 17:45 | 17:50 | F |
| Class 1 (Fast Cruisers, TCF 0.777 and above)* | 17:55 | 18:00 | Numeral 1 |
| Class 3 (Open day boats) | 18:05 | 18:10 | Numeral 3 |
| Class 2 (Slow Cruisers, TCF 0.769 and below)* | 18:10 | 18:15 | Numeral 2 |
| Lasers | 18:25 | 18:30 | L |

*Irrespective of handicap movements during the season, boats will remain within the Class allocated to them at the commencement of series 1.

5. COURSES

- 5.1 The course to be sailed will be displayed at or before the preparatory signal in a frame on the main Committee Boat. This changes RRS 27.1
- 5.2 IRC rated boats participating in Class 1 may after completing their course sail an extension to the course which will be displayed in a small frame forward of the main frame on the Committee Boat prior to their start.

6 FINISHING

- 6.1 When the first boat in her race fails to complete the course by the time limit, the results of the race will be determined by the placings of the boats through the start/finish line when either '□' or '9' is a mark of the course and when SSI Paras 12.1(c) and 12.1(d) do not apply.

7. TIME LIMIT

- 7.1 RRS 35 and SSI 12.1 is varied in that:
The time limit for all classes is 2015 hrs but when the first boat in her class finishes within the time limit, the race shall be valid only for those boats which finish within the time limit or within thirty minutes of the first boat in her class whichever is the later.

8. SCORING

- 8.1 The Low Point scoring system will be used in accordance with RRS Appendix A except that the score for DNC will be decided by the Race Committee.
- 8.2 Series 1 and Series 3 will consist of 8 races and Series 2 will consist of consist of 7 races. Three races in each series shall be completed to constitute a valid series.
- 8.3 Discards based on the number of races in each series are shown below. This changes RRS Appendix A.
- 8.4 In the Laser Class the helmsman and not the boat, will score points in each race.

| Series 2 | | Series 1 & 3 | |
|-----------|----------|--------------|----------|
| Races | Discards | Races | Discards |
| 7 | 2 | 8 | 3 |
| 6 | 1 | 7 | 2 |
| 5 | 1 | 6 | 1 |
| 4 or less | 0 | 5 | 1 |
| | | 4 or less | 0 |

9. HANDICAPPING

9.1 Handicaps will be determined by the Racing Sub Committee or its nominee; and will be posted on the Club board prior to racing each week.

10. SAFETY

10.1 Class 2 boats may use their engines up to the one minute gun.

10.2 When the Y flag is flown all competitors must wear personal flotation devices (RRS race Signal and RRS 40).

10.3 Lasers should keep to the South of the course during preceding Start sequences.

11. PRIZEGIVING & PRIZES

11.1 The prizegiving and supper will be held at the Club on the 6th October 2010 at 1900 for 1930 hrs.

11.2 Prizes to be awarded are: The RSYC Challenge Bowl, The Leveson - Gower Bowl, The Hempstead Trophy, The Ambitron Trophy and The Secretary's Pot .



The Queen's Jubilee Race

Sunday 6th June 2010

HW Portsmouth 06:22 BST

Notice of Race and Supplemental Sailing Instructions

1. ORGANISING AUTHORITY

The organising authority is the Royal Solent Yacht Club

2. RULES

- 2.1 Racing will be governed by the Racing Rules of Sailing (RRS) the RSYC Standard Sailing Instructions 2010, as amended by these Supplemental Sailing Instructions shall apply. In cases where there is conflict between the Notice of Race, the Club's Standard Sailing Instructions and the Supplemental Sailing Instructions; the Supplemental Sailing Instructions or failing that the Standard Sailing Instructions shall prevail.

3. TIMES & SIGNALS

| Class | Warning Signal | Start Signal | Class Flag | Class Lights |
|--------------------|----------------|--------------|------------|--------------|
| Class 1 ~ Cruisers | 1015 | 1020 | Numeral 1 | Red |
| Folkboats | 1025 | 1030 | 'F' | Amber |
| XOD | 1035 | 1040 | 'X' | Green |
| YOD | 1045 | 1050 | Numeral 3 | Red |
| Old Gaffers | 1055 | 1100 | 'G' | Amber |

4. STARTING LINE

- 4.1 For the Old Gaffers Class, SSI 11.2(b) is changed in that the outer limit mark will be an orange inflatable mark with ROYAL SOLENT YACHT CLUB thereon located approximately 600 metres northwards of the signal staff, and 150 metres northwards from No 9 buoy.

5. FINISHING LINE

- 5.1 When the first boat in the race fails to complete the course by the time limit, the results of the race will be determined by the placings of the boats through the start/finish line when either '□' or '9' is a mark of the course and when SSI 12.1(c) and 12.1(d) do not apply.

6. TIME LIMIT

- 6.1 RRS 35 and SSI 12.1 is varied in that:
The Time limit for all classes is 1300 hrs with no exceptions.

7. SCORING

- 7.1 The race will be scored as provided in RRS Appendix A using the Low Point system.

8. HANDICAPPING

- 8.1 Handicaps, if appropriate, will be determined by the Racing Sub Committee or its nominee; and will be posted on the board in the Club prior to racing.

9. PRIZES

- 9.1 Prize giving will take place at the Club as soon as is practicable after racing.

Please detach and return to the Hon Sailing Secretary

ROYAL SOLENT YACHT CLUB
THE QUEEN'S JUBILEE RACE
Sunday 6th June 2010

ENTRY FORM

(delete where applicable)

I/Wewish to enter my/our boat for races organised by the Royal Solent Yacht Club. I/We agree to be bound by the Racing Rules of Sailing.

I/We undertake to sail in compliance with the RYA Racing Charter.

I/We certify that the particulars of my/our boat, as stated on this form, are correct.

I/We accept that neither the Royal Solent Yacht Club nor its representatives shall bear any responsibility for any loss, damage, death or personal injury howsoever caused to any boat, or members of its crew.

I/We confirm that I/we hold third party indemnity insurance with a minimum cover of £2,000,000.

I/We warrant the suitability of the boat for races and accept full responsibility for the sea-worthiness and safe navigation of the boat, the competence of the crew and for deciding whether to start, continue or retire from any race. I/We accept that any inspection of the boat does not in any way limit my/our absolute responsibility in these respects.

I/We undertake to draw these matters to the attention of all members of the crew before the start of each and every race.

Signature

Please complete details over

Name of boat

Sail No Class

Handicap: IRC PY Other

Insurance Details

Insurance Company

Policy Number

Owner(s)

Address

.....

..... Post Code

Telephone Number

Home

Work.....

E-Mail.....

Signed

Date

Owner / Person in charge (please delete as appropriate)

The completed form must be returned to the Hon Sailing Secretary by Friday 21st May 2010. Late entries may be considered.

SUNSET SERIES 2010

Monday 9th to Thursday 12th August

Notice of Race & Supplemental Sailing Instructions

1. ORGANISING AUTHORITY

The Organising Authority is The Royal Solent Yacht Club.

2. RULES

- 2.1 Racing will be governed by the Racing Rules of Sailing (RRS) the RSYC Standard Sailing Instructions 2010 as amended by these Supplemental Sailing Instructions shall apply. In cases where there is conflict between the Notice of Race, the Club's Standard Sailing Instructions and the Supplemental Sailing Instructions; The Supplemental Sailing Instructions or failing that the Standard Sailing Instructions shall prevail.

3. SCHEDULE OF RACES

- 3.1 There will be a series of seven races, 9th to 12th August inclusive.

4. TIMES & SIGNALS

- 4.1 The start times and classes shall be as follows:

| | Class | Warning Signal | Starting Signal | Class Flags |
|-----------------------------------|--------------|-----------------------|------------------------|--------------------|
| Monday 9th to Thursday 12th | XOD & YOD | 1805 | 1810 | No:3 |

On Monday Tuesday & Thursday there will be a second race for all classes. The first start for the second race will be as soon as possible after the completion of Race 1.

5 FINISHING LINE

- 5.1 When the first boat in her race fails to complete the course by the time limit, the results of the race will be determined by the placings of the boats through the start/finish line when either '□' or '9' is a mark of the course and when SSI 12.1(c) and 12.1(d) do not apply.

6. TIME LIMIT

- 6.1 RRS 35 and SSI 12.1 is varied in that the time limit for all classes in each race is forty five minutes after the valid start time but when the first boat in her class finishes within the time limit, the race shall be valid only for those boats which finish within the time limit or within fifteen minutes of the first boat in her class whichever is later. (This does not apply to the race on Wednesday 11th when Wednesday Evening Supplemental SI '6' shall apply)

7. SCORING

- 7.1 The event will be scored as provided in RRS Appendix A using the Low Point System except that the score for DNC will be decided by the Race Committee. Seven races are scheduled for the series, of which two races shall be completed to constitute a valid series. Each boat's series score will be the total of her race scores with no discards.
- 7.2 The scores for Race 3 (Wednesday 12th) will also count in the Royal Solent Yacht Club Wednesday Evening Race Series 3.

8. PRIZEGIVING & PRIZES

- 8.1 The Prize Giving for the Black Rock trophy will be held at the Club on Wednesday 6th October at 1900 for 1930 hrs. Other trophies will be given at the Class Dinners.
- 8.2 The following prizes will be awarded:-
XOD Sunset Trophy ~ 1st overall (separately scored)
YOD Sunset Trophy ~ 1st overall (separately scored)
The Black Rock Trophy to the XOD/YOD boat placed first overall when scored together

CENTENARY CHASE

Saturday 25th September 2010

HW Portsmouth 13:14 BST

Notice of Race & Supplemental Sailing Instructions

1. ORGANISING AUTHORITY

1.1 The organising authority is the Royal Solent Yacht Club.

2. RULES

2.1 Racing will be governed by the Racing Rules of Sailing (RRS). The RSYC Standard Sailing Instructions 2010, as amended by these Supplemental Sailing Instructions shall apply. In cases where there is conflict between the Notice of Race, the Club's Standard Sailing Instructions and the Supplemental Sailing Instructions; the Supplemental Sailing Instructions or failing that the Standard Sailing Instructions shall prevail.

3. CONDITION OF ENTRY

3.1 Boats shall not be deemed to be racing unless the owner/person in charge has completed and returned a Condition of Entry Form (page 7) to the RSYC Hon Sailing Secretary.

4. THE EVENT

4.1 The Centenary Chase is a pursuit race for keelboats and cruisers under sail. The event is a 'FUN RACE' and had been designed to appeal to all members with sailing boats of differing performances.

5 CLASS FLAGS

- 5.1 Boats after the warning signal and whilst racing shall fly ‘NP 1’.
- 5.2 All boats shall clearly display their sail numbers or other means of identification.

6. STARTING

- 6.1 RRS 26 and 29 are varied in that:
The boat with the lowest handicap will start at 1400 hrs with the Warning Signal (NP 1) at 1350 hrs and the Preparatory Signal (Flag P) at 1355 hrs. Thereafter boats shall start at or after their respective start times **AS SHOWN IN APPENDIX A** of these Supplemental Sailing Instructions (to be published separately) without further sound signals being used This amends RRS 26. Recalls will be conducted in accordance with RRS 29.1 amended so that Flag X shall be flown only for 1 minute after the relevant start, notwithstanding that a boat may not by this time have sailed to the pre start side of the starting line. The inner limit for all boats shall be as described in SSI 11.2(a)

7. HANDICAPS

- 7.1 Handicaps and Start Times will be determined by the Racing Sub-Committee or their nominee; and will be available on the day of the race from the Club.

8. INSTRUCTIONS

- 8.1 SSI 10 is changed in that:
One of the following three courses will be selected by the Race Committee.

Course ‘A’ Line—1—C—G—4—Line (or reverse)

Course ‘B’ Line—1—8—Line twice round (or reverse)

Course ‘C’ As Course ‘B’ **BUT WITH DIFFERENT START TIMES**

A display board will show ‘W’ for a westward start and ‘E’ for an eastward start.

The course to be sailed 'A' 'B' or 'C' will be displayed in the course frame in RED for all marks to be left to PORT or GREEN for all marks to be left to STARBOARD.

9. TIME LIMIT

- 9.1 RRS 35 and SSI 12.1 are changed in that:
The time limit will be 1800 hrs with no extension.

10. PRIZEGIVING & PRIZES

- 10.1 Prize giving will take place at the Club as soon as practicable after racing

Yarmouth Marine Service Trophy:

Awarded to the Overall Winner

Royal Southern Yacht Club Challenge Trophy:

Awarded to the first Royal Solent Yacht Club Member on overall results.

RSYC Glass:

Awarded to 1st open keel boat.

The Mill Road Garage Trophy

Awarded to winner of 'Old Gaffers' Class.

The Secretary's Prize:

Awarded to the last boat to finish

RSYC STANDARD SAILING INSTRUCTIONS 2010

1. ORGANISING AUTHORITY

1.1 The Organising Authority is the Royal Solent Yacht Club.

2. RULES

2.1 Races will be governed by the Rules as defined in the Racing Rules of Sailing.

2.2 a) Unless SSI 2.2(b) applies, race signalling flags shall be used.

b) If the autorace light signalling system is to be used (see Appendix 3) a board with black and white painted vertical stripes will be displayed.

2.3 RRS 35 is changed by SI 12.1, RRS 60 is changed by SI 13.3, RRS 77 is changed by SI 6.1, RRS 26 is changed by SI 2.3, SI 8.2, RRS 40 is changed by SI 8.2 RRS 27.3 29. & 32. are changed by Appendix 3.

2.4. RRS 32.1 is changed by adding paragraph 32.1(f) : ***for any reason deemed necessary by the Race Committee.***

2.5. RRS 60.2 is changed by adding paragraph 60.2(d) : ***disqualify without a hearing any boat observed by at least two members of the Race Committee to have sailed an incorrect course.*** This amends RRS 63.1.

2.6 Start and finish lines, at a committee boat at Grants or on the Club Balcony Line, are designated by Numeral Pennants flown from the Club's main flagstaff situated on the lawn immediately to the west of the Clubhouse.

a) Numeral Pennant '8' for starting and finishing races from a committee boat.

b) Numeral Pennant '9' for races starting from a committee boat and finishing at Grants.

c) Numeral Pennant '0' for starting and finishing races from Grants.

d) Numeral Pennant '6' for races starting at Grants and finishing on the Club Balcony line

See SSI 10.4 for Course Instructions, SSI 11 for Start Instructions and SSI 12 for Finish Instructions specific to each start and finish line.

3. **CONDITION OF ENTRY**

- 3.1 Boats shall not be deemed to have started unless the owner/person in charge has completed, signed and returned to the RSYC Secretariat, the Club's Condition of Entry Form on page 7.

4. **SCHEDULE OF RACES AND MINIMUM ENTRY**

- 4.1 The schedule of races, the classes to race, the order, the date of races and the time of the starting and/or warning signals will be published in the Royal Solent Yacht Club Programme of Races and/or on the Club notice board, or in a separately issued Notice of Race.
- 4.2 There will be no race unless a minimum of two boats start in a race.

5. **CLASS FLAGS AND ENSIGNS**

- 5.1 All Class 1 & 2 boats shall fly their designated class flag.
- 5.2 Ensigns shall be struck prior to the preparatory signal.

6. **DISTINGUISHING MARKS**

- 6.1 Under exceptional circumstances, the Race Committee may permit a boat to use sails carrying distinguishing marks other than those required by RRS 77. Competitors should seek such permission from the Race Committee in good time and stating reason for the request.

7. **INSPECTION**

- 7.1 Boats are subject to inspection at any time for compliance with the Racing Rules of Sailing.

8. **SAFETY**

- 8.1 The crews of all boats that are not fully decked and are capable of raising the keel, centre-board or dagger-board shall wear lifejackets or other adequate personal buoyancy at all times while afloat.
- 8.2 A boat racing shall, where applicable, comply with its class rules with regard to safety, and where applicable shall comply with the ISAF Special Regulations for category 4 races.

- 8.3 A boat is entirely responsible for its own safety, whether afloat or ashore, and nothing, whether in the Notice of Race or Sailing Instructions or anywhere else reduces this responsibility.
- 8.4 It is for the boat to decide whether it is fit to sail in the conditions in which it will find itself. By launching or going to sea, the boat confirms that it is fit for those conditions and that its crew is competent to sail and compete in them.
- 8.5 Nothing done by the organisers can reduce the responsibility of the boat nor will it make the organisers responsible for any loss, damage, death or personal injury, however it may have occurred, as a result of the boat taking part in the racing. The organisers encompass everyone helping to run the race and the event, and include the Organising Authority, the Race Committee, the race officer, patrol boats and beachmasters.
- 8.6 The provision of patrol boats does not relieve the boat of its responsibilities
- 8.7 No boat shall race with an anchor protruding over its bow. A boat shall not be disqualified for a breach of this instruction without prior warning and adequate opportunity to make correction.
- 8.8 **A boat which retires from a race shall make every effort to ensure that the Race Committee is notified as soon as possible and before returning to her berth. FAILURE TO COMPLY MAY RESULT IN DISQUALIFICATION FROM THE SERIES**

9. AMENDMENTS

- 9.1 Amendments to sailing instructions will be posted on the notice board located in the main entrance hall of the Club not later than one and a half hours before the start of a relevant race and notified by flying Flag 'L' on the signal flagstaff at the RSYC starting line at Grants and/or on the RSYC flagstaff situated immediately to westwards of the RSYC Clubhouse.
- 9.2 Any information displayed at the Club will if possible be displayed on the Royal Solent Yacht Club's website-www.royalsolent.org or will be available by phoning the Secretariat on 01983 760256. In the event of bad weather on the morning of the race competitors are advised to check via one of these methods. Failure to display information on the Club's website will not be grounds for redress

10 COURSE INSTRUCTIONS

- 10.1 Course instructions and general information may be transmitted on VHF Channel 37 (M) at the discretion of the Race Committee. Failure of any boat to receive any such transmissions shall not be regarded as grounds for any protest or any request for redress.

- 10.2 Boats in whatever direction they are racing, other than Dinghy Classes, shall pass to the Southwards of:
- (a) "Cross Boom" and all other booms, beacons and posts in the Lymington River Entrance. Boats other than Dinghy Classes may pass on either side of "Jack in the Basket"
 - (b) The Royal Lymington Yacht Club starting platform.
- 10.3 Boats shall not pass through the barrier South of Durns Point which is an obstruction to sea room.
- 10.4 Courses will be selected from the navigational buoys and racing marks which have been allocated code letters, numbers or symbols as shown in the SI Appendices 1 and 2.
- (a) Course started from Committee Boat
The course to be sailed will be displayed at or before the warning signal in a frame on the main committee boat. Letters, numbers or symbols on a red background indicate that such marks shall be rounded to port and similarly, letters, numbers or symbols on a green background indicate that such marks shall be rounded to starboard.
 - (b) Course started from Grants
The course to be sailed will be displayed at or before the warning signal at Grants in the frame Eastwards of the signal flagstaff when the sequence of letters, numbers or symbols displayed shall be read from top left to bottom right.
Red letters, numbers or symbols displayed on either a black or white background indicate that such marks of the course shall be rounded to port.
Green letters, numbers or symbols displayed on either a black or a white background indicate that such marks of the course shall be rounded to starboard.
- 10.5 When two or three white diamond shapes are displayed with the course signal, the course shall be sailed two or three times round respectively. Boats shall pass through the gate formed by the committee boat or the Grants Inner White Post and a Distance Mark, from the direction of the previous mark, at the end of each round before commencing the next round.
- 10.6 When '□' is displayed as part of the course signal, it indicates that boats shall pass through the gate described in 10.5 above from the direction of the previous mark.
- 10.7 When 'S' flag over 'H' flag is displayed by a committee boat adjacent to a mark of the course it denotes that boats shall pass that mark in the required manner and shall then proceed directly to cross the finishing line in the direction from that mark.

The committee boat may make repeated sound signals to draw attention to the visual signal.

10.8 Boats in whatever direction they are racing, shall pass to the Northwards of an unmarked spherical yellow buoy situated to the southeast of the inner trot of Moorings, located to the west of Yarmouth Pier.

10.9 Direction of the Course from the last Mark (**For Boats finishing at Grants**)

Boats finishing at the Grants finishing line from 'E' (Pylewell), 'F' (Berthon) and all marks that are both to the east of these and to the north of the deep water navigation channel in the Solent shall finish by crossing the finishing line from east to west. Boats finishing at the Grants finishing line from 'D' (RLYC ODM) and all marks that are both to the west of this mark and to the north of the deep water navigation channel in the Solent shall finish by crossing the finishing line from west to east. 19 is to the West of Grants when 19 is a mark of the course.

11. **STARTING**

11.1 Starting Line (Grants)

The starting line at Grants, is approximately 200 metres to the East of the Royal Solent Yacht Club. The starting line is formed by bringing the signal flagstaff bearing a horizontally striped orange and white diamond shape into line with a white post topped with a white diamond framed orange cross which is about 15 metres to seawards from the sea wall.

11.2 Limit Marks

- (a) The inner limit mark for all races is the seaward post with a diamond shaped top of the starting line transit. Please note that this mark may not necessarily be in water deep enough for some boats
- (b) The outer limit mark for all races, except those for dinghy classes, is a yellow cylindrical buoy marked with '9' in black, Charles Stanley in blue and Stockbrokers in black thereon with a yellow X topmark, located approximately 450 metres northwards of the signal flagstaff.
- (c) The outer limit mark for dinghy classes is a Dan buoy with '19' thereon and a yellow top mark about 120 metres northwards of the signal flagstaff.

11.3 Starting Line (Committee Boat)

- (a) The main committee boat will be identified by a white flag with 'Royal Solent YC Committee' thereon.
- (b) The starting line will be between an orange flag on the committee boat and the course side of the outer distance mark.
- (c) Please note that the distance mark may not necessarily be in water deep enough for some boats

11.4 VHF Communications

The Race Officers may at their discretion use VHF radios (Channel 37) to broadcast the complete or part thereof of the countdown sequence to the start of a race. Also they may announce the names of boats being recalled. In this event all boats being recalled for a particular start will be announced. This is for assistance to competitors and does not replace the formal starting procedure described in the Notice of Race.

12. **FINISHING**

12.1 Time Limit

RRS 35 is varied in that:

- (a) The time limit for all races shall be 3 hours after the valid starting time except for Folkboat, XOD, YOD, Scow and dinghy races held on Sundays and/or Bank Holidays when the time limit shall be 2 hours.
- (b) When the first boat in her race finishes within the time limit, the race shall be valid only for those boats which finish within the time limit or within 45 minutes of the first boat in her race, whichever is the later.
- (c) For races of more than one round when the first boat in her race fails to finish within the time limit, but has completed one or more rounds of the course, the results of the race will be determined by the placings at the end of the last completed round.
- (d) When the first boat in her race fails to complete a round of the course by the time limit, the race shall be abandoned or abandoned and resailed.

12.2 Finishing Line (Grants)

- (a) The finishing line except for Dinghy classes racing from Grants, will be an imaginary line between the signal flagstaff described in SSI 11.1 above and the finishing mark which is the yellow cylindrical buoy described in SSI 11.2(b) above, approximately 450 metres Northwards of the signal flagstaff.
- (b) For Dinghy classes racing from Grants, the finishing line will be an imaginary line between the signal flagstaff described in SSI 11.1 above and the Dan buoy described in SSI 11.2(c) above approximately 120 metres Northward of the signal flagstaff.

12.3 Finishing Line (Committee Boat)

- (a) The finishing line will be between a staff displaying an orange flag on the committee boat and the course side of the finishing line outer distance mark.
- (b) The committee boat will be distinguished by a blue flag.
- (c) Boats shall cross the finishing line from the direction of the last mark. If an inner limit mark is laid, boats shall pass between it and the outer distance mark.

12.4 Finishing Line (Club Balcony)

- (a) The Finishing line will be an imaginary line between a staff displaying an orange flag on the Eastern end of the Club Balcony and the Outer Distance Mark (9)

13. **PROTESTS** 13.1 Protests shall be made in accordance with RRS Part 5 and transmitted to the RSYC Secretariat within two hours of the time the last boat in her race finishes. Protest forms are available from the RSYC Secretariat.

13.2 The time and place of the hearing will be posted on the RSYC notice board and it is the responsibility of the protestor and the protestee to acquaint themselves of this information and to present themselves at the appropriate time with any witnesses they may wish to call. In the event of either party failing to be present at a hearing the protest may be heard in their absence.

13.3 The Race Committee or the Protest Committee may initiate a protest as a result of information received from any source concerning contact which has caused damage or injury This amends RRS 60. In the event of conflict between RRS 60 and this SI, this SI will prevail.

14. **EXONERATION**

- 14.1 The Exoneration Penalty and the Advisory Hearing and RYA Arbitration of the RYA Rules Disputes Procedures will be available. See official Notice Board for details.

15. **RESULTS AND NOTICE BOARD**

- 15.1 Unless otherwise notified, the results of races will be posted on the RSYC notice board as soon as practicable.
- 15.2 The notice board is located in the main entrance hall of the Club.

16. **DISCLAIMER OF LIABILITY**

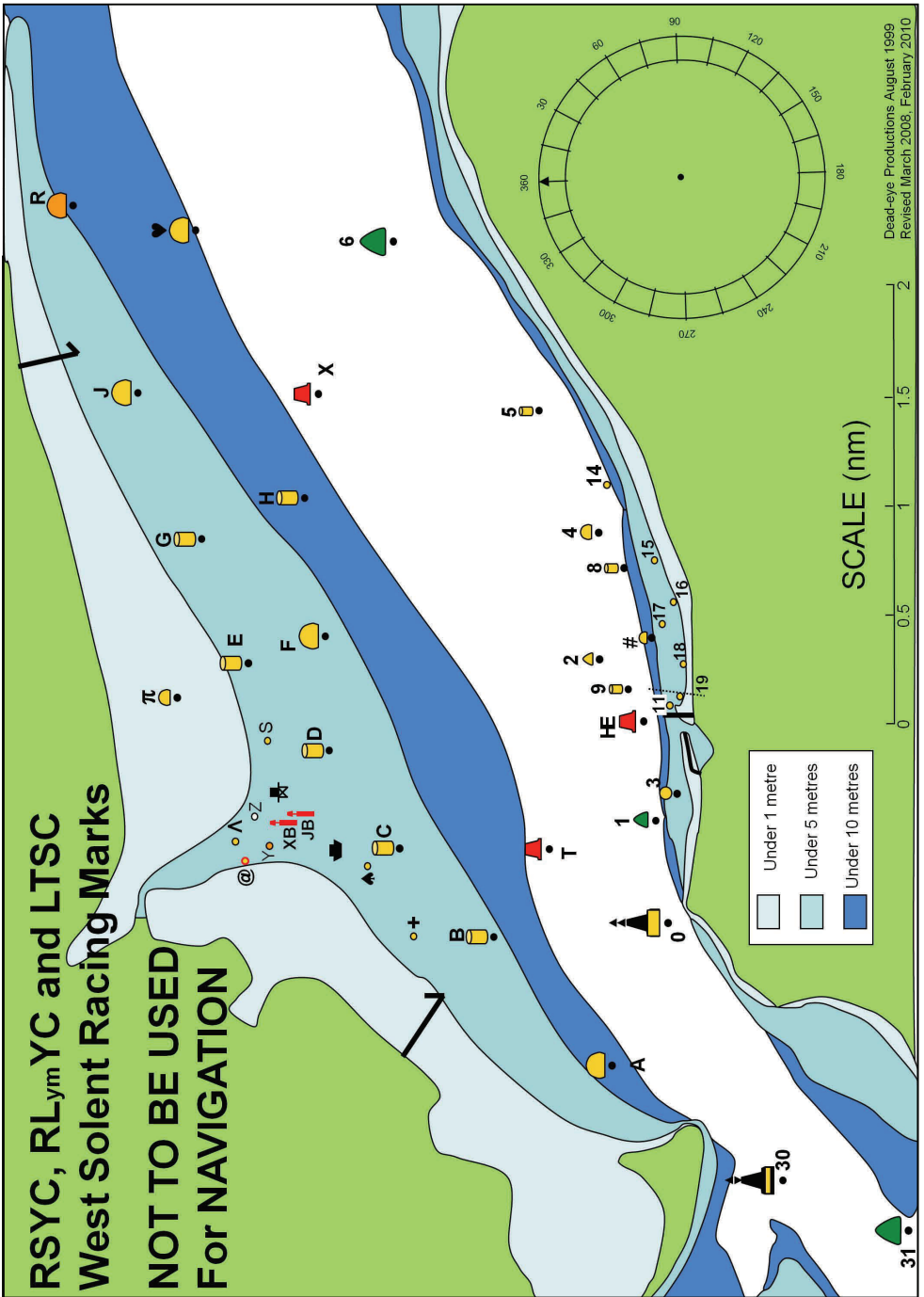
- 16.1 Competitors participate in races organised by the Royal Solent Yacht Club entirely at their own risk. See RRS 4. Decision to Race. The Royal Solent Yacht Club will not accept any liability for material damage or personal injury or death sustained in conjunction with or prior to, during or after races when they are the organising authority.

17. **INSURANCE**

- 17.1 Each participating boat shall be insured with valid third party liability Insurance with a minimum cover of £2,000,000.

| | Name | Sponsor | N Lat | W Long | |
|--------------------------|--|------------------|----------|----------|---------------------|
| A | Hurst | Echopilot | 50.42.79 | 01.32.53 | Yellow sphere |
| B | Pennington | Dunford | 50.43.38 | 01.31.54 | Yellow cylinder |
| C | Oxey | Colten | 50.43.83 | 01.30.86 | Yellow cylinder |
| D | Royal Lymington | Yacht Haven | 50.44.17 | 01.30.10 | Yellow cylinder |
| E | Pylewell | Moore Blatch | 50.44.58 | 01.29.43 | Yellow cylinder |
| F | Berthon | Berthon | 50.44.20 | 01.29.22 | Yellow sphere |
| G | Tanners | Rib-it.com | 50.44.79 | 01.28.47 | Yellow cylinder |
| H | Jackson | Paul Jackson | 50.44.30 | 01.28.16 | Yellow cylinder |
| ♥ | Quod Possumus! | Quod Possumus! | 50.44.83 | 01.26.09 | Yellow sphere |
| J | Sowley | Lynx Sports | 50.45.11 | 01.27.33 | Yellow sphere |
| K(E) | West Lepe | | 50.45.23 | 01.24.09 | Red Can |
| L(E) | East Lepe | | 50.45.93 | 01.21.07 | Red Can |
| * (E) | Prince Consort | | 50.46.41 | 01.17.56 | North Cardinal |
| R | Durns | Aquaspec | 50.45.43 | 01.25.89 | Orange Sphere |
| T | Lymington Bank | | 50.43.10 | 01.30.85 | Red Can |
| X | Solent Bank | | 50.44.23 | 01.27.37 | Red Can |
| 0 | Sconce | | 50.42.52 | 01.31.43 | North Cardinal |
| 1 | Black Rock | | 50.42.58 | 01.30.64 | Green cone |
| 2 | George Hotel | The George Hotel | 50.42.86 | 01.29.40 | Yellow cone |
| 3 | Harbour | | 50.42.47 | 01.30.43 | Yellow sphere |
| 4 | BWIM | BW Moorings | 50.42.86 | 01.28.42 | Yellow sphere |
| 5 | Wadworth 6X | Wadworth | 50.43.15 | 01.27.49 | Yellow cylinder |
| 6 | Hamstead Ledge | | 50.43.86 | 01.26.18 | Green conical |
| 8 | Bouldnor | On The Rocks | 50.42.73 | 01.28.69 | Yellow cylinder |
| 9 | R Sol YC ODM | Charles Stanley | 50.42.72 | 01.29.70 | Yellow cylinder |
| HE | East Fairway Buoy | | 50.42.64 | 01.29.88 | Red can |
| # | Towers | | 50.42.63 | 01.29.26 | Yellow sphere |
| 30 | NE Shingles | | 50.41.96 | 01.33.40 | East cardinal |
| 31 | Warden | | 50.41.48 | 01.33.55 | Green Can |
| 32(W) | Shingles Elbow | | 50.40.36 | 01.36.05 | Red can |
| 33(W) | SW Shingles | | 50.39.35 | 01.37.45 | Red pillar |
| 34(W) | Hengistbury Head | | 50.42.38 | 01.44.52 | Yellow sphere |
| 35(W) | Christchurch Ledge | | 50.41.56 | 01.41.50 | Yellow sphere |
| 36(W) | North Head | | 50.42.68 | 01.35.51 | Green Can |
| Lymington shore | | | | | |
| + | Plus Mark | BHG | 50.43.78 | 01.31.53 | Yellow sphere |
| ♣ | West Mark | Scott Bailey | 50.43.99 | 01.30.99 | Yellow sphere |
| | Baverstock | | 50.44.17 | 01.30.86 | ♣ |
| JB | Jack in the Basket | | 50.44.28 | 01.30.57 | Red post |
| XB | Cross Boom | | 50.44.36 | 01.30.58 | Red post |
| Y | Black & Orange | | 50.44.42 | 01.30.76 | Black/orange sphere |
| @ | West Reach | | 50.44.59 | 01.30.92 | Red/yellow sphere |
| Λ | East Reach | Garmin | 50.44.63 | 01.30.80 | Yellow cylinder |
| Z | Black & White | | 50.44.51 | 01.30.56 | Black/white sphere |
| | RLYC Platform | | 50.44.42 | 01.30.42 | ♣ |
| S | East Mark | Sanders Sails | 50.44.51 | 01.30.00 | Yellow sphere |
| π | Pylewell Inner | | 50.44.92 | 01.29.70 | Yellow sphere |
| Yarmouth shore | | | | | |
| 11 | Pier | | 50.42.48 | 01.29.94 | Yellow sphere |
| 14 | Stone pier | | 50.42.82 | 01.28.05 | Yellow sphere |
| 15 | Hallmark | | 50.42.63 | 01.28.70 | Yellow sphere |
| 16 | St Swithins | | 50.42.52 | 01.29.99 | Yellow sphere |
| 17 | Camel | | 50.42.57 | 01.29.17 | Yellow sphere |
| 18 | Mount | | 50.42.44 | 01.29.43 | Yellow sphere |
| 19 | Dinghy ODM | | 50.42.44 | 01.29.82 | Yellow sphere |
| Marks not charted | | | | | |
| M | Moveable mark | | | | Orange inflatable |
| N | Moveable windward mark | | | | Orange inflatable |
| □ | Gate - start/finish line when used to mark the end of a round and not the finish | | | | |

(E) – off chart to the East, (W) – off chart to the West



AUTORACE LIGHT SIGNALLING SYSTEM

APPENDIX 3

The Autorace light signalling system will use the following signals. Times shall be taken from the lights; the absence of a sound signal shall be disregarded.

If the autorace light signalling system is to be used a board with black and white painted vertical stripes will be displayed .

| | |
|---|--------------|
| Class starts will be preceded by a single coloured light, activated at or before the warning signal. | |
| FIRST START | RED |
| SECOND START | AMBER |
| THIRD START | GREEN |
| Further starts repeat sequence as above | |

| Signal | Lights | Sound Signals | Minutes before Starting Signal |
|---------------|---|----------------------|---------------------------------------|
| Warning | Class light + 2 white lights (flashing prior to Preparatory signal) | 1 sound | 5 |
| Preparatory | As above but plus 2 more white lights (flashing prior to One-minute signal) | 1 sound | 4 |
| One-minute | As above but plus 2 more white lights (flashing prior to Starting signal) | 1 sound | 1 |
| Starting | All lights OFF | 1 sound | 0 |

Delete RRS 27.3 and replace with:

Before the starting signal, the race committee may for any reason

POSTPONE (flashing blue lights with two sound signals)

ABANDON (flashing blue lights with three sound signals)

RRS 29.1 ***INDIVIDUAL RECALL***

Delete reference to Flag 'X' and replace with ***flashing blue lights***

RRS 29.2 ***GENERAL RECALL***

Delete reference to 'First Substitute' and 'First Substitute is removed' and replace with ***flashing blue lights*** and ***flashing blue lights are switched off***

RRS 32.1 ***SHORTENING OR ABANDONING AFTER THE START***

Delete First paragraph only and replace with

After the starting signal, the race committee may ABANDON the race (flashing blue lights with three sounds) or SHORTEN THE COURSE (flashing blue lights with sound signals) as appropriate.

RRS 32.2

Delete (display flag 'S' with two sounds) and replace with

(flashing blue lights with two sounds)

Notes